

Powerful forensic LASER illumination
with best-in-class Crime-lite technology

Crime-lite[®]

LASER

447nm

520nm



447nm & 520nm Handheld Forensic LASERS

Crime-lite[®] LASER

For the detection and examination of every last trace of forensic evidence; the new Crime-lite LASER provides intense, ultra-narrowband LASER illumination from a truly portable light source.

Available in Blue (447nm) and Green (520nm) wavelengths, the Crime-lite LASER is capable of revealing evidence including latent and treated fingermarks, body fluids, and other invaluable traces of forensic evidence:

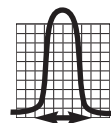
- ✓ Latent & treated fingermarks
- ✓ Body fluids (incl. blood, saliva, semen etc.)
- ✓ Accelerants and traces of GSR
- ✓ Illicit drug residues
- ✓ Other minute traces of evidence

Power x Portability

Testament to the skills and experience within our Research and Development team, each Crime-lite LASER combines cutting-edge, patent-pending technology in a truly portable device easily transported to and operated at the crime scene.

Complete End-User Safety

Designed to be the safest handheld forensic laser currently available, a combination of robust safety interlocks protects the end-user from accidental exposure to the laser beam at all times.



Wavelength
Accuracy



Truly
Portable



Crime-lite
Performance



Intense
Laser Power



Safety
Assurance

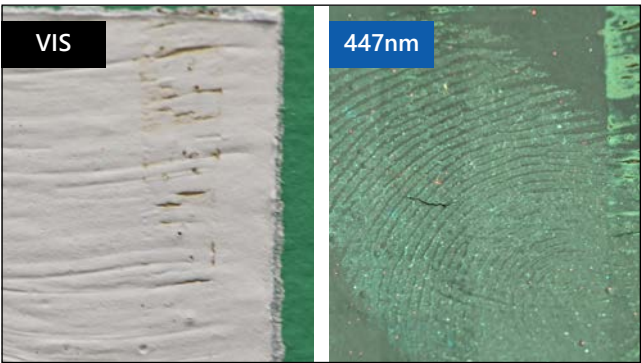


Advanced
Functionality

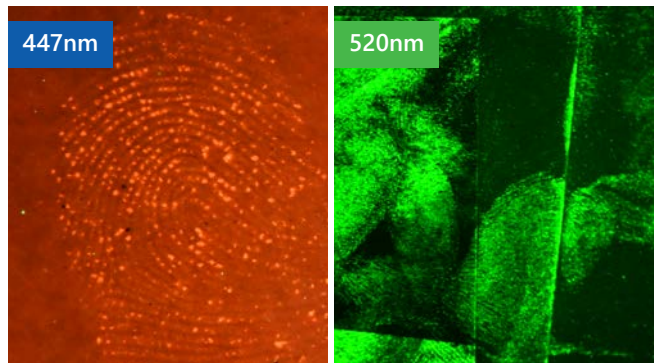
Detect More Evidence



WATCH VIDEO



Latent fingerprint on painted wall

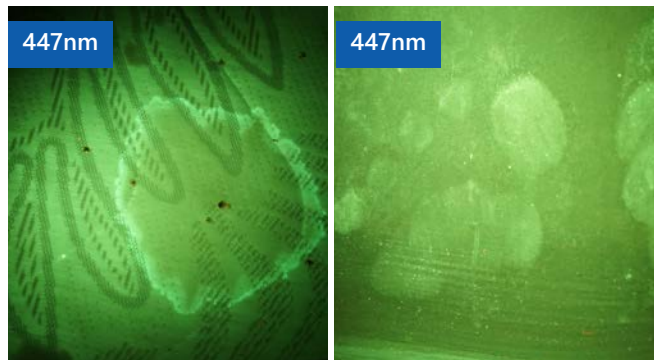


DFO

1-2 Indandione

Providing high-intensity beams of Blue (447nm) and Green (520nm) illumination, each Crime-lite LASER is **capable of detecting even the faintest traces of evidence** at the crime scene and in the laboratory.

Condensing the full power of a lab-based forensic laser into a compact, lightweight unit, the Crime-lite LASER is suitable for the detection of body fluids (blood, semen, saliva, sweat, urine, vaginal fluids), latent fingerprints, chemically treated fingerprints, suspect fibres, illicit drugs, gunshot residues and other traces of evidential value.



Body Fluids

Latent footprint

Best-in-class technology

High-intensity LASER output
Blue 447nm | Green 520nm



Despeckled shadow-free beam
Powerful divergent beam



High power/weight ration
Operated via battery or AC mains



Triple-interlocked safety features

- Passcode activation
- Dead man's trigger safety switch
- Mechanical beam shutter



Self-test diagnostics

Pre-use checks ensure optimal performance at all times



Dark Adaptation

Ensure operator readiness



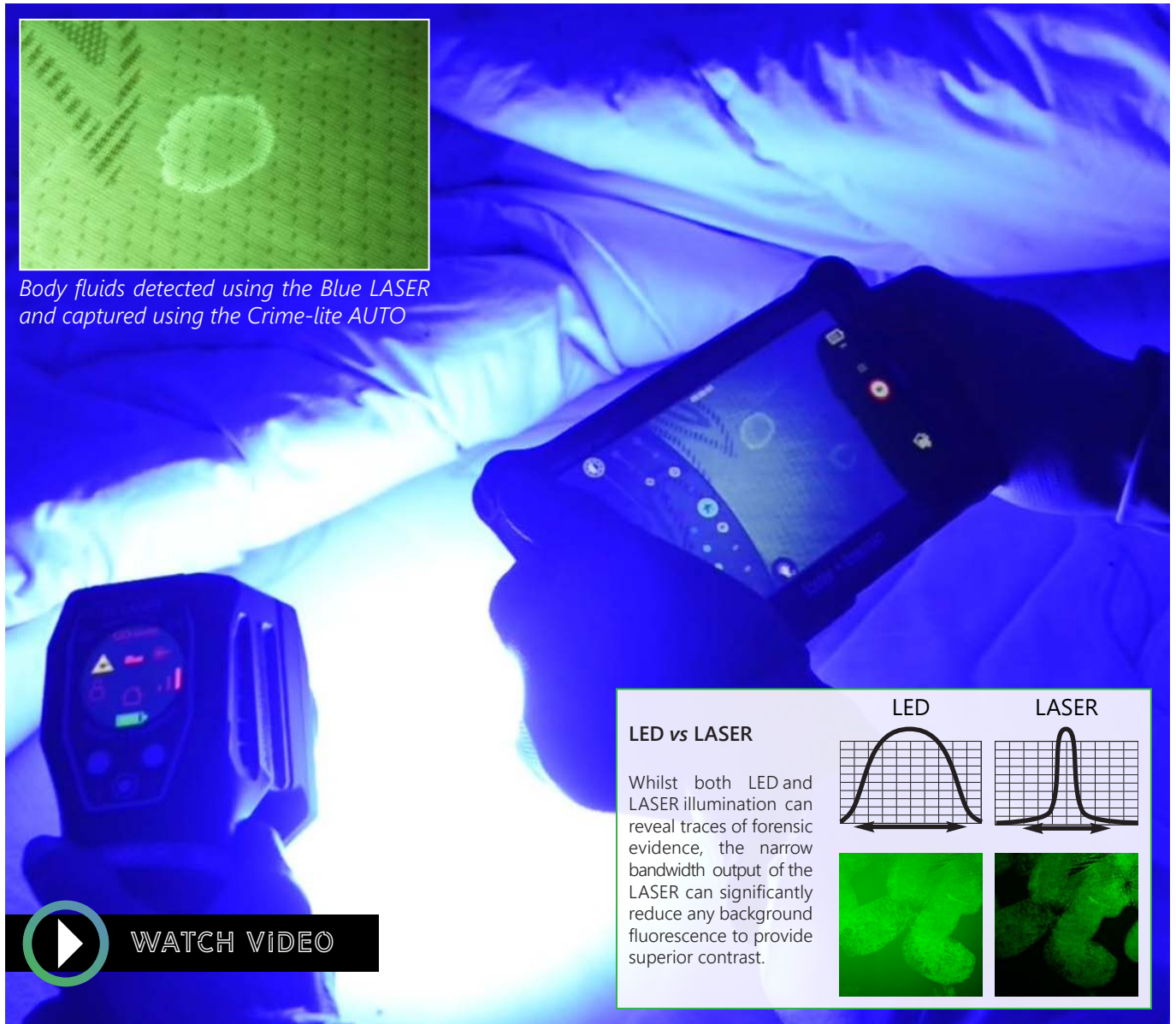
Our most advanced light source to date, the Crime-lite LASER combines advanced **cutting-edge laser technology**, together with robust safety features into a truly portable handheld device.

Both the blue and green LASERs' include patent-pending beam divergence optics to produce a highly focussed beam of even, despeckled, shadow-free illumination ideal for the detection of weakly fluorescent evidence.

Advanced functionality including dark adaptation and self-test diagnostics are controlled via the devices 3-button LCD interface.



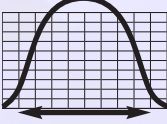
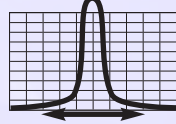
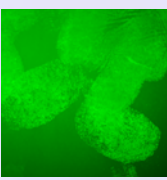
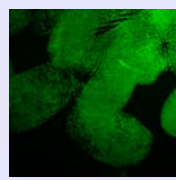
Narrowband LASER Illumination



Body fluids detected using the Blue LASER and captured using the Crime-lite AUTO

LED vs LASER

Whilst both LED and LASER illumination can reveal traces of forensic evidence, the narrow bandwidth output of the LASER can significantly reduce any background fluorescence to provide superior contrast.

LED	LASER
	
	

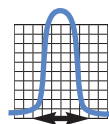
WATCH VIDEO

The primary reason that an examiner may select to use a LASER over a LED light source is the narrow waveband accuracy that a LASER provides.

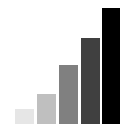
Crime-lite **LASER illumination is surgically precise**, designed to excite fluorescence within a narrow 2nm bandwidth, illuminating only the desired target evidence without exciting any unwanted background fluorescence.

Focussing all of the LASER's output into such a narrow illumination bandwidth further increases the light intensity and ensures an even dispersion of light across the diameter of the beam.

High-Intensity LASER Output



Narrowband illumination



Adjustable intensity



Shadow-free beam

Complete end-user safety



Mechanical beam shutter

End-user safety is central to the design of the Crime-lite LASER. A combination of **robust safety interlocks** protects the user, and anyone else in the vicinity, from accidental exposure to the device's powerful beam at all times.

Each Crime-lite LASER includes 3-layers of safety to prevent unwanted firing of the beam. Firstly, an activation passcode must be entered on the devices LCD interface. Secondly a mechanical beam shutter must be manually opened, before thirdly the laser may be fired by depressing the 'dead man's trigger', a safety switch that cuts off the beam the moment that the trigger is released. In addition to these measures, each Crime-lite LASER is supplied with a physical interlock plug.

Triple-Interlocked Safety



Passcode activation



Dead mans' trigger



Physical interlocks

Crime-lite PRO Vision LASER Lenses



BLUE LASER 447nm	GOGGLES	CAMERA FILTERS (62MM)	
	LASER Goggle	Cut-On Filter	Bandpass Filter
Wavelength	495nm	GG495	BP530
Order Code	QCL/LASER/GG495	QCL/153	QCL/312

GREEN LASER 520nm	GOGGLES	CAMERA FILTERS (62MM)	
	LASER Goggle	Cut-On Filter	Bandpass Filter
Wavelength	570nm	OG570	BP560
Order Code	QCL/LASER/OG570	QCL/153	QCL/311

foster+freeman PRO Vision is a unique fluorescence viewing lens filter technology designed to **increase the contrast and visibility of evidence** under high-intensity LASER illumination.

Featuring an anti-glare dichroic coating to prevent auto-fluorescence, PRO Vision LASER viewing lenses feature a lightweight and comfortable goggle headset suitable for sustained use over an extended period.

Designed specifically for use with the Crime-lite LASER, PRO Vision LASER goggles are EN207 LASER safety eyewear compliant.

Detect More Evidence



Fluorescence optimised



Anti-glare dichroic coating



Comfortable design and fit

Crime-lite LASER Product Specifications

Crime-lite LASER 447nm

BLUE LASER LIGHT SOURCE

Product Order Ref #QCL/LASER/BLUE

- 447nm Blue Laser light source
- Even, despeckled, shadow-free illumination
- Triple-interlocked safety features
- Advanced functionality via LCD interface

Crime-lite LASER 520nm

GREEN LASER LIGHT SOURCE

Product Order Ref #QCL/LASER/GREEN

- 520nm Green Laser light source
- Even, despeckled, shadow-free illumination
- Triple-interlocked safety features
- Advanced functionality via LCD interface

COMMON FEATURES

HARDWARE FEATURES

- Premium, ergonomically balanced light source
- Weight (excluding battery) ~800g (approx.)
- Supplied with wrist lanyard and protective end cap

LASER SAFETY FEATURES

- CLASS 3B LASER product
- Conforms to EN60825-1:2014 and EN61010-1:2010 standards
- Operated via 'Dead man's trigger' safety switch
- Passcode activation
- Integrated mechanical beam shutter
- Emission indicator LEDs
- Safety Interlock override plug

INTERFACE

- Integrated 1.3" LCD
- Easy to use, push-button operation
- Adjust LASER intensity
- Light source 'Self-Test' function
- Dark adaptation checker
- Battery charge status indicator

RECHARGEABLE BATTERY

- Designed for use with 18v rapid-charge Li-ion battery (offered separately)
- Battery charge status indicator
- Up to 450 minutes run time (on a full battery charge)

AC MAINS POWER

- Versatile USB-C connector

Patent Pending. United Kingdom Patent Application No. 2105301.2

FORENSIC LASER KITS

Crime-lite® LASER **Blue Kit** 447nm Laser +Accessories

Order # QCL/LASER/BLUEKIT

- 447nm Blue Laser light source
- Triple-interlocked safety features

Supplied in a Peli Air case with:

- 495nm PRO VISION safety goggles
- 2x MAKITA 18v Batterys
- Battery charger
- USB-C Power Supply Unit
- Interlock override plug
- Wrist lanyard
- Dark adaptation goggles

Crime-lite® LASER **Green Kit** 520nm Laser +Accessories

Order # QCL/LASER/GREENKIT

- 520nm Green Laser light source
- Triple-interlocked safety features

Supplied in a Peli Air case with:

- 570nm PRO VISION safety goggles
- 2x MAKITA 18v Batterys
- Battery charger
- USB-C Power Supply Unit
- Interlock override plug
- Wrist lanyard
- Dark adaptation goggles

Crime-lite® LASER **Blue & Green Kit** 447nm & 520nm Lasers +Accessories

Order # QCL/LASER/BLUE-GREENKIT

- 447nm Blue Laser diode light source
- 520nm Green Laser diode light source
- Triple-interlocked safety features

Supplied in a Peli Air case with:

- 495nm PRO VISION safety goggles
- 570nm PRO VISION safety goggles
- 3x MAKITA 18v Battery
- Battery charger
- USB-C Power Supply Unit
- 2x Interlock override plugs
- 2x Wrist lanyards
- Dark adaptation goggles