

Crime-lite® 8x4_{Mk2}



A multi-wavelength LED light source for forensic photography

- ***Create the optimum illumination for the examination of all types of evidence***
- ***Eight light sources from UV to red***
- ***32 LEDs provide 98 colour-mix combinations***
- ***Laboratory & crime scene applications***

foster + freeman

Crime-lite® 8x4_{Mk2}

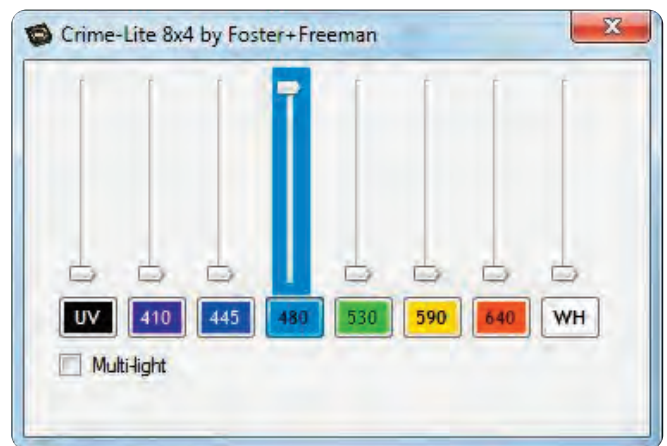
Multi-wavelength LED ring light providing optimum lighting for forensic photography

The Crime-lite® 8x4_{Mk2} is designed to meet the varying demands of forensic photography enabling the operator to create the optimum illumination for all types of evidence and backgrounds, enhancing image contrast and definition.

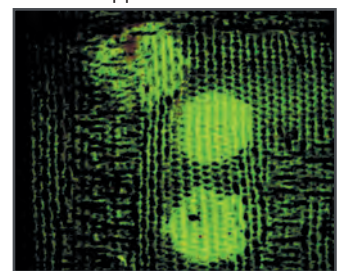
The ring light has been redesigned to include seven narrow bandwidth LED arrays, emitting light at peak wavelengths of 365, 410, 445, 475, 520, 590 and 640nm. These may be selected individually or in multiple combinations using manual or software control to create 98 different colours, enabling the operator to tailor illumination to suit the evidence. Fixed combinations also provide a choice of 10 white light emissions with a range of colour temperatures between 3000K and 10,000K. In addition, an array of standard white light emitting LEDs with a colour temperature of 6500 K have 10 intensity settings, creating a total of 118 possible combinations.

Product features

- 32 high intensity LEDs from UV to Red
- Create the optimum illumination for all types of evidence
- For use in the laboratory or at the crime scene
- Solid construction with no serviceable parts
- Ideal light source for use with the Foster+Freeman DCS 5 dedicated fingerprint enhancement workstation



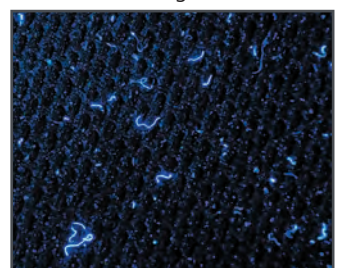
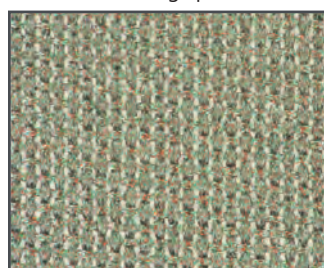
Crime-lite 8x4 Control software application



Body fluids on fabric viewed under violet illumination



DFO treated fingerprints on banknote viewed under orange illumination



Fibres stand out against background under blue illumination



Crime-lite[®] 8x4_{Mk2} specifications

PRODUCT

DESCRIPTION & FEATURES

Crime-Lite[®] 8x4_{Mk2} photographic ring light

QCL/231x8

- Light source fitted with 32 high intensity LEDs, configured as a ring light providing even illumination for forensic photography. Features an integral control unit for activating lamps individually or in combination
- Up to 4 colours may be switched on to give up to 98 colour combinations. As well as variable white light at 6500K with 10 different colour temperature settings between 3000K and 10,000K.
- Mounting facilities for optional laboratory copy stand and scene-of-crime tripod.

Other features

- optimum working distance 150mm.
- illumination area at 150mm, 140mm diameter.
- maximum lens diameter to fit, 85mm.
- 24V DC input (requires power adaptor QCL/80).
- supplied with Crime-lite 8x4 Control software application
- keyswitch for UV LEDs
- detachable side handles

Requires additional Crime-lite 8x4 viewing filters



Illumination	White	UV	Violet	Blue	Blue/Green	Green	Orange	Red
LEDs	x4	x4	x4	x4	x4	x4	x4	x4
Peak bandwidth		365nm	410nm	445nm	475nm	520nm	590nm	640nm
10% bandwidth	400-700nm	350-380nm	395-425nm	420-470nm	445-510nm	480-560nm	570-610nm	600-660nm

Device classified to EN62471:2008

RISK GROUP 2
DO NOT STARE INTO BEAM
POSSIBLE OPTICAL RADIATION HAZARD



RISK GROUP 2
CAUTION: EMITS UV
MINIMISE EXPOSURE TO SKIN AND EYES



Crime-Lite[®] 8x4 Viewing filters







- Long-pass Schott glass filters with anti-glare technology, an additional reflective long pass coating to suppress auto-fluorescent emissions of the filter glass for maximum optical performance when used with high power light sources





Filter	Clear	Pale Yellow	Yellow	Deep Yellow	Yellow Orange	Orange	Orange Red	Bright Red	Red	Deep Red	Deep Red
Wavelength	420nm	455nm	495nm	515nm	530nm	550nm	570nm	590nm	610nm	630nm	645nm
1% transmission	408nm	435nm	476nm	495nm	510nm	529nm	549nm	571nm	593nm	613nm	624nm
Product code	QCL/230x8	QCL/181X8	QCL/182X8	QCL/183X8	QCL/184X8	QCL/185X8	QCL/186X8	QCL/187X8	QCL/188X8	QCL/189X8	QCL/207X8

- | | |
|---|--|
| <p>QCL/232x8/SET Complete filter set with case</p> <p>QCL/137x8 Filter storage case</p> <p>QCL/139x8 Polarising filter</p> | <ul style="list-style-type: none"> ● Complete set of high performance long-pass Schott glass viewing filters and a cross polarising filter suitable for the visual inspection and photography of fluorescent evidence. Includes a storage case with a capacity for 12 filters ● Capacity for up to 12 filters ● 110mm diameter adjustable polariser with 70mm fixed analyser that fits over the viewing aperture of the Crime-lite8x4_{Mk2}, slide mounting |
|---|--|

Crime-lite® 8x4Mk2 accessories

CODE	PRODUCT	DESCRIPTION & FEATURES	
Crime-Lite® 8x4Mk2 photographic ring light			
QCL/80	Power Adaptor	<ul style="list-style-type: none"> ● 90-240vAC input, 24vDC output 	
QCL/127x8	Bellows	<ul style="list-style-type: none"> ● Provides ambient light shielding 	
DCS4/TRIPOD	Professional tripod	<ul style="list-style-type: none"> ● Reversible head, micro positioning slide plate, variable friction arm, clamp, support shelf and detachable wheeled 'dolly' to move and lock tripod into position ● Requires QCL/146x8/ASSY 	
QCL/146x8/ASSY	Crime-lite adjustable mount assembly	<ul style="list-style-type: none"> ● Allows full adjustment to suit most SLR camera and lens combinations and is also suitable for use with low cost copy stands ● Includes adjustable Camera Mount (QCL/141x8) 	
DCS4/STAND	Copy stand and column	<ul style="list-style-type: none"> ● Free standing Kaiser copy stand ● Transmitted light base, 430 x 350mm, fitted with four 13 watt daylight, high frequency fluorescent lamps for even illumination ● 1.2m column ● Removable base plate with magnetic bars for holding exhibits (Incident lighting not included) ● Requires QCL/144x8/ASSY 	
QCL/144x8/ASSY	Copy stand mount	<ul style="list-style-type: none"> ● Allows fully independent adjustment of camera and Crime-lite8x4, suits most SLR camera and lens combinations Modified Kaiser copy stand head with ● Adjustable Crime-lite8x4 mount (QCL142x8) ● Adjustable camera mount (QCL/141x8) (Suitable for Kaiser's R1 columns only) 	
QCL/145x8	Scene of crime case	<ul style="list-style-type: none"> ● Rugged waterproof case with machined foam cut-outs to hold Crime-lite8x4, mains power unit, portable battery pack, viewing filters, adjustable tripod mount assembly QCL/146x8/ASSY 	
QCL/236x8	Search handle	<ul style="list-style-type: none"> ● Detachable handle allows one handed operation of Crime-lite 8x4 (not shown) 	

Crime scene battery pack

QCL/81	Rechargeable battery	<ul style="list-style-type: none"> ● Ni-MH, 3.3Ah, 24v, gives 50 minutes ● Operation, charge time less than 1 hour ● Weight 1.5kg 	
QCL/82	Battery charger	<ul style="list-style-type: none"> ● 100-240V 50/60Hz 23VA, with lead 	
QCL/83	Battery adaptor	<ul style="list-style-type: none"> ● Battery to Crime-lite8x4 connector 	
QCL/84	Battery holder	<ul style="list-style-type: none"> ● Padded nylon pouch with shoulder strap 	
QCL/95	Battery conditioner	<ul style="list-style-type: none"> ● Discharges and re-conditions rechargeable batteries 	