

foster+freeman

# *Crime-lite*

# MLPRO

RAPID EVIDENCE SCREENING



**Detect, Examine & Mark-Up Traces of Evidence**



## ***Crime-lite* ML PRO**

The Crime-lite ML PRO is the first in a new generation of evidence screening tools built to meet the demands of busy forensic laboratories tasked with processing large quantities of evidence.

With fully-integrated UV-Vis-IR illumination and an 'intelligent optics' imaging system, the ML PRO can be used to mark-up evidence, detecting the presence of bodily fluids and locating minute fragments of trace evidence.

Examinations are conducted using the system's 10" touch-screen display and can be displayed in high-resolution via an attached 32" monitor. Pre-set examinations and automatic filter selection make the system quick and easy to use.

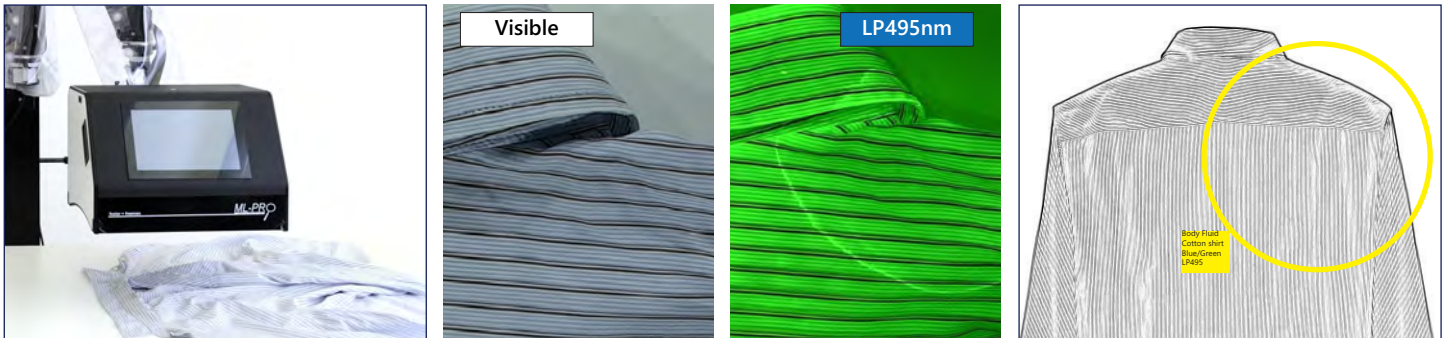


**RAPID  
EVIDENCE  
SCREENING**

- ✓ Semen
- ✓ Blood
- ✓ Saliva
- ✓ Vaginal Fluids



Blood is visualised on dark material using IR 780nm illumination. The material 'drops out' while the blood absorbs the IR



Body Fluid is visualised on a cotton shirt under Blue 495nm illumination. A line drawing is generated and annotated



## Search & Detect

Examine items under UV, Visible and Infrared light sources to locate the presence of evidence.

Easily manoeuvre the ML PRO over evidence performing one-click automated searches or using manual controls to select light source and filter combinations.



## Capture & Enhance

Record live video and high-quality still images using a Vis/IR sensitive camera with 'intelligent optics'.

Zoom-in and apply basic image enhancements, including exposure control and image invert, to detect evidence that would have otherwise gone unnoticed.



## Annotate & Report

Identify areas of interest and mark-up digital images of evidence using text and shape annotations.

Produce court-ready reports complete with chain-of-custody information, contextual images, side-by-side comparisons, and software-generated line drawings.





**Touchscreen Interface - No PC Required**

Simply controlled via a 10" LCD display

**UV/Vis/IR Flood, Side and Spot LEDs**

Powerful illumination across the spectral range

**'Intelligent Optics' Vis/IR Camera**

Auto or manual control of filter selection

**Optional 32" Monitor**

A large secondary display can be mounted alongside ML PRO

**Wall or Trolley Mounted**

'Weightless' low-friction arm makes it easy to manoeuvre the ML PRO over evidence



**Fully-integrated hardware**

The ML PRO includes all hardware required for the screening, detection and digital mark-up of evidence.

Hardware features include:

- High-resolution UV/Vis/IR camera with zoom lens
- Flood, side and spot LED light sources
- Motorised fluorescence imaging filter wheel
- 10" LCD display with internal processor
- No PC required

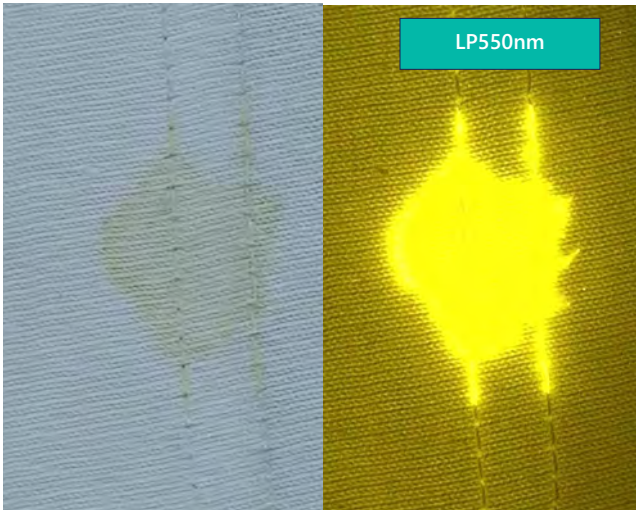


**'App-style' interface**

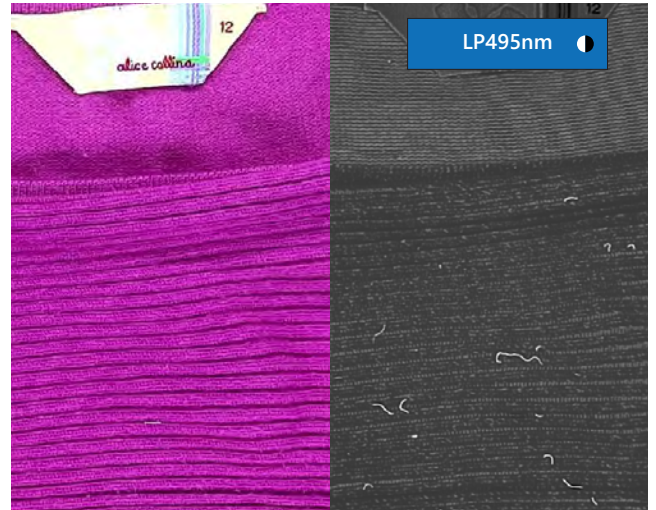
Operated via the integral touchscreen, an 'app-driven' interface simplifies the evidence screening process.

Software features include:

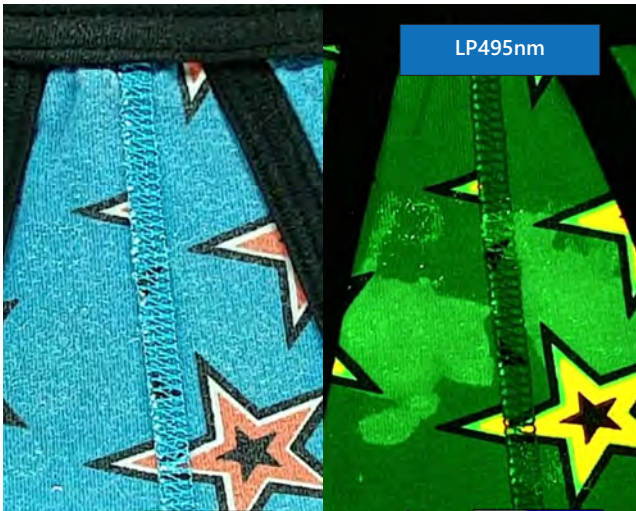
- Manual or semi-automated operation
- Choice of pre-programmed routines
- Search by evidence-type or illumination waveband
- Intelligent filter selection
- Image comparison and enhancement tools



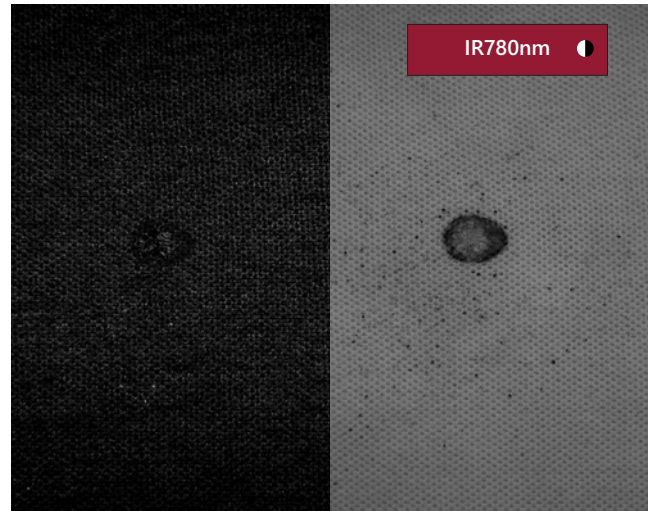
Body Fluid on white cotton  
visualised using Blue/Green illumination



Fibres on colourful knitwear  
visualised using Blue illumination and converted to grayscale



Blood on black fabric  
visualised using Infrared illumination



GSR on black fabric  
visualised using Infrared illumination



## Serology

A non-contact, chemical-free screening solution, the ML PRO includes illumination options to detect all types of body fluid.



## Trace Evidence

High-intensity illumination, used in combination with zoom magnification, can reveal minute fragments of evidence.



## Post-Mortem

Deploy multi-spectral forensic imaging technology in the morgue to reveal deep-tissue contusions.

### Fluorescence examinations

- ✓ Semen, sweat, urine, vaginal fluid

### Infrared imaging

- ✓ Blood on dark backgrounds

### Fluorescence examinations

- ✓ GSR, fibres, bone, tooth and hair

### Contrast examinations

- ✓ Glass fragments, soil and pollen

### Fluorescence examinations

- ✓ Bruises, bites and puncture wounds

### Infrared imaging

- ✓ Tattoos on charred skin

# System Specifications

## System Hardware

Camera	High sensitivity colour/IR camera Autofocus zoom lens
Illumination	<b>Flood</b> UV, Violet, Blue, Blue/Green, Green, Red
	<b>Side</b> UV, White, IR
	<b>Spot</b> UV, Violet, Blue, Blue/Green, Green, Red
Interface	10.1" multi-touch LCD interface Internal processor (no PC required)



## Optional Accessories

**Crime-lite ML PRO Wheeled Trolley** *(pictured)* QCL/MLPRO/TROLLEY  
- Easily manoeuvre the Crime-lite ML PRO around the laboratory  
- Heavy-duty wheeled trolley with lockable castors  
- Includes Crime-lite ML PRO articulated arm and monitor mount

**Wall-Mounted Articulated Arm** QCL/MLPRO/ARM  
- 'Weightless' manoeuvre of Crime-lite ML Pro  
- 180° range of motion with 1.6M max. reach

**Wall-Mounted Monitor Arm** QCL/MLPRO/MONARM  
- Mount a 32" monitor to the Wall-Mounted Articulated Arm

**32" Monitor** QCL/MLPRO/MON32  
- Secondary 32" UHD Monitor (3840x2160)

**Wireless Mouse & Keyboard** QCL/MLPRO/KM  
- For non-touchscreen operation of Crime-lite ML PRO

*Crime-lite MLPro with 32" secondary monitor mounted on Wheeled Trolley*

## System Software

Two modes of operation for semi-automated (basic) or manual (expert) control of examinations:

### BASIC semi-automated examination mode

- 'App' style icon-based user interface
- Pre-set examinations for Body Fluids (general), Semen, Urine, and Blood searches
- One-click Full AutoScan examines evidence under multiple examination conditions with results displayed as selectable thumbnails
- Image Comparison Function

### EXPERT manual examination mode

- Complete control of all examination settings including illumination, filtration and imaging

### General software features

- Image comparison facilities to compare split live and stored images side-by-side
- Pull-out image gallery of all recent work allowing comparison with current and previous images
- Editable image annotation facilities (text and various shapes including arrows, lines, boxes and circles)
- Save and Recall images complete with all examination settings

### Software updates

- Software suite updates for 2 years

Head Office, UK Sales Office  
Vale Park | Evesham | Worcestershire  
WR11 1TD | United Kingdom

Tel: +44 (0)1386 768 050  
sales@fosterfreeman.com

USA Sales Office  
46030 Manekin Plaza | Suite 170  
Sterling | VA 20166 | USA

Tel: 888 445 5048  
usoffice@fosterfreeman.com

EU Sales Office  
40470 Duesseldorf | Germany

Tel: +49 (0)211 158 422 57  
owen.lang@fosterfreeman.com

**foster+freeman**

fosterfreeman.com