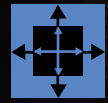
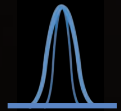




96 LEDs



Short range or wide area search



Narrowband trimming filters

Crime-lite[®] XL

The worlds most powerful handheld LED light source for the forensic laboratory and CSI professional

- 96x high-intensity LEDs provide up to 115W output power
- Powerful shadow-free beam for close-up examination or wide area search
- Emulates power density of a forensic laser
- Precision, anti-glare camera filters and goggles

Where serious crime demands intensive crime scene examination, the Crime-lite XL range provides near-laser output power capable of revealing the minutest traces of evidence.

foster + freeman

Crime-lite[®] XL

FOR CRIME SCENE INVESTIGATION

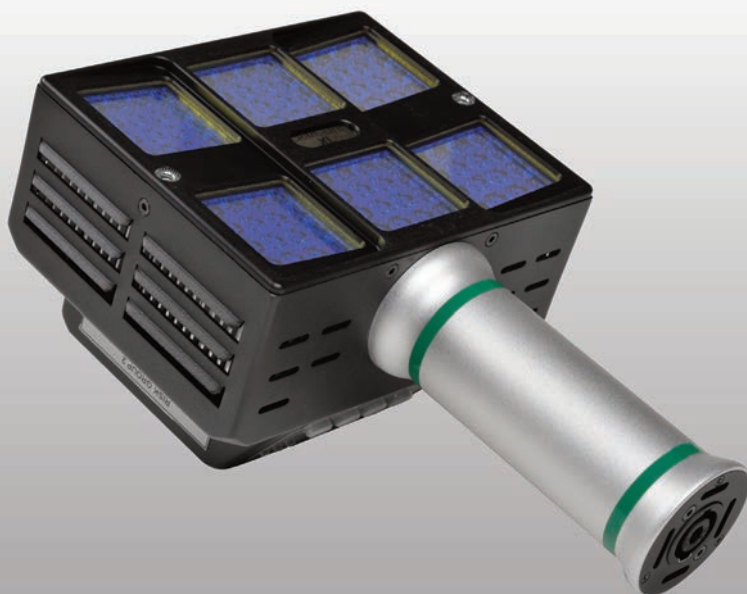
With 96 high intensity LEDs, the Crime-lite XL is unrivalled as the worlds most powerful range of handheld LED forensic light sources.

The range offers Blue, Blue/Green, Green, and Orange wavelengths, effective in the close-up examination and wide area detection of minute traces of blood, body fluids, fibres, explosive residues, stained and naturally fluorescent fingerprints.

An important feature of the new Crime-lite XL range is the provision of optional, clip-on, narrowband 'trimming filters' that further reduce output bandwidths to 10nm. These enhance visibility of evidence by reducing or eliminating interference from background fluorescence.

Product features

- Fitted with 96 high power LEDs providing up to 115W of radiant optical power
- Three adjustable power levels
- AC voltage or battery powered for use at the crime scene
- Constructed from durable anodised aluminium
- Ready for use at the crime scene in seconds



Output	10% band width	Peak
Blue	420-470nm	445nm
Blue/Green	445-510nm	475nm
Green	480-560nm	520nm
Orange	570-610nm	590nm

LEDs	96 x high efficiency LEDs
LED Output Power	Up to 115W <small>Dependent on Wavelength</small>
Runtime	Continuous with adaptor
Battery life	44-270 minutes
Charge time	22 minutes
Weight	1.75Kg

Crime-lite XL[®] cased kits

Foster + Freeman Crime-lites[®] are available individually or as cased kits containing all of the accessories required to begin searching for and examining evidence.

Crime-lite Kit Accessories include:

- AC power adaptor
- AC power cable
- Narrowband trimming filters
- 2x anti-glare viewing goggles per light
- Anti-glare 62mm camera filters and filter pouch.
- SOC case

Below are a selection of standard kits that meet the requirements of the majority of Crime-lite[®] users, if you would like to specify your own custom kit please contact our sales office or your local Foster + Freeman agent.

SINGLE LIGHT KITS	Light Source(s)	Order Code
	XL Blue	QCL/XL/B/K
	XL Blue/Green	QCL/XL/B/G/K
	XL Green	QCL/XL/G/K
XL Orange	QCL/XL/O/K	

TWO LIGHT KITS	XL Blue XL Green	QCL/XL/BG/K
	XL Blue/Green XL Orange	QCL/XL/BGO/K

Crime-lite[®] Camera Filters & Goggles

ANTI-GLARE CAMERA FILTERS AND VIEWING GOGGLES (INCLUDED IN CRIME-LITE XL CASED SETS)

Crime-lite[®] XL anti-glare camera filters and viewing goggles are essential accessories and are required for the examination of fluorescent evidence.

Foster + Freeman camera filters and viewing goggles are manufactured with Schott glass and feature an additional long-pass coating to suppress auto-fluorescent emissions from the filter glass, thus ensuring maximum optical performance with high power light sources

PRODUCT ORDER CODES

Wavelength	Camera Filter	Goggles
Yellow GG495	QCL/82S/009	QCL/06/B
Orange OG550	QCL/80	QCL/82S/012
Bright Red OG590	QCL/82S/010	QCL/125
Red RG645	QCL/82S/025	QCL/84

NARROW BAND TRIMMING FILTERS (INCLUDED IN CRIME-LITE XL CASED SETS)

Narrow band trimming filters clip-on to the Crime-lite[®] XL in order to further reduce the output bandwidth preventing interference from background or substrate fluorescence.

Filter	Wavelength	Product Code
Blue	448nm	QCL/XL/03
Blue/Green	475nm	QCL/XL/04
Green	522nm	QCL/XL/05
Orange	597nm	QCL/XL/06

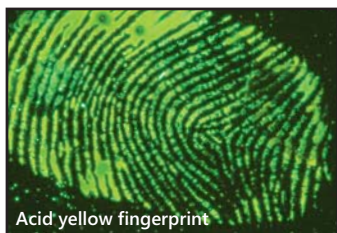
EVIDENCE SPECIFIC BANDPASS FILTERS FOR USE WITH CRIME-LITE XL BLUE, BLUE/GREEN & GREEN

Bandpass filters isolate a band of wavelength from the total spectrum and have been tailored for use in the detection of specific evidence types.

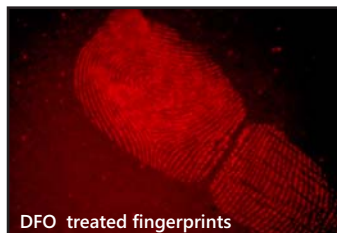
LENS FILTERS	Evidence type	Wavelength	Product Code
	Body Fluids	530nm	QCL/223
	Body Fluids	550nm	QCL/224

GOGGLES	Evidence type	Wavelength	Product Code
	Body Fluids	530nm	QCL/220
	Body Fluids	550nm	QCL/221

Crime-lite® Applications



Acid yellow fingerprint



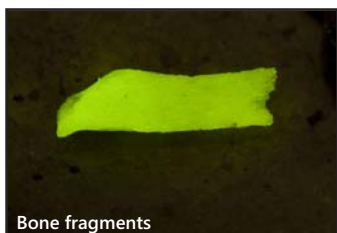
DFO treated fingerprints



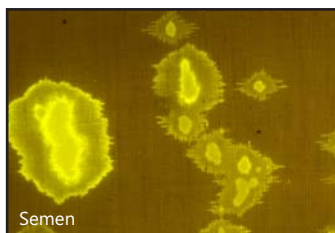
Palm print treated with nanoparticles



Powerful beam can even locate marks that have been painted over



Bone fragments



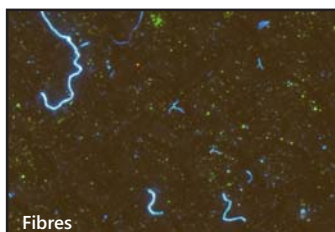
Semen



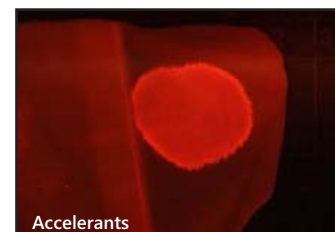
Gunshot Residue



Semen on fabric



Fibres



Accelerants

Orange						✓					✓							✓	
Green				✓		✓		✓		✓	✓						✓	✓	
Blue/Green				✓		✓	✓	✓	✓	✓	✓	✓						✓	
Blue	✓	✓	✓	✓	✓	✓	✓	✓	✓	✓			✓	✓	✓	✓		✓	
	Blood stains	Blood spatter	Body fluids	Bone & tooth fragments	Hair	Fibres	Gunshot residues	Accelerants	Redwop	Nanoparticles	DFO	Greenwop	Rhodamine	Basic yellow	Acid yellow	Ardrox	Magnetic red powder	Ninhydrin	General Mixed Debris



96x LED Crime-lite XL



1x LED light source

The effectiveness of the Crime-lite XL over a large area is demonstrated in this crime scene reconstruction pictured first being illuminated with a single LED light source (above) and then with the Crime-lite XL (left)

Crime-lite® Accessories

CRIME-LITE® XL PORTABLE POWER PACK

The Crime-lite® XL portable power pack provides a perfect solution during crime scene investigations where the examiner requires improved mobility without the hindrance of trailing wires or where there is limited access to AC power.

The Crime-lite®XL is attached to the power pack via a heavy duty power cable to a pair of rechargeable Li batteries mounted in the integrated battery booster assembly at the base of the pack.

The durable all-weather padded pack is designed to be worn across one shoulder allowing complete freedom of movement as well as quick and easy access to the rucksacks storage compartments.

Crime-lite® XL Portable Power Pack kit QCL/XL/07

- Weather-proof pack with integrated battery booster
- 4 x rechargeable Li batteries
- 2 x Crime-lite® battery charger

Crime-lite® XL Portable Power Pack base unit QCL/XL/09

- Weather-proof pack with integrated battery booster



AC power adaptor QCL/XL/02

- Allows Crime-lite XL to be connected to AC voltage supply.
- Input 90-264V, output 48V.
- Supplied with 2x connecting cables, total length 5m.



Scene of crime case QCL/XL/01

- Rugged, waterproof and shock resistant case to hold Crime-lite XL and accessories.
- Machined foam cut-outs for up to 2x Crime-lite XL's, 1x AC power adaptor unit and cables, viewing goggles and filters.



SOC trolley and fixing strap QCL/206

- Foldable trolley with wheels and fixing strap for transporting cased Crime-lite XL SOC kit



Crime-lite laboratory arm QCL/XL/08

- Heavy duty low-profile articulated arm for safe hands-free operation.
- Bench or wall mounted, reach 1.32m
- Internal power cable connects to QCL/XL/02 (supplied separately).

The Crime-lite® range

Crime-lite® XL

The worlds most powerful handheld LED forensic light source, the Crime-lite XL features 96 surface mount LEDs providing up to 115 Watts of radiant power capable of revealing the minutest traces of evidence.

Crime-lite® 82S

Where serious crime demands intensive crime scene investigation, the 16 LED Crime-lite 82S offers high levels of illumination.

Crime-lite® 82L

16 high intensity white LEDs mounted behind a cylindrical lens give a wide, oblique light beam that is ideal for detecting surface debris and shoe prints in dust.

Crime-lite® 42S

The Crime-lite 42S provides three illumination outputs in a single light source.

Crime-lite® 2

Effective illumination of evidence from a single high intensity LED.



WHY CHOOSE CRIME-LITE®?

- High quality of design and construction
- LEDs selected for peak performance and wavelength
- 100% light output throughout battery charge
- Worldwide product support
- High power to weight ratios
- Compact and energy efficient

	No. of LEDs	LED output power	No. of Wavelengths	Rechargeable Battery	A/C Mains Option	Weight
Crime-lite 2	1	1.2W	8	Yes	Yes	490g
Crime-lite 82S	16	19W	8	Yes	Yes	560g
Crime-lite 82L	16	N/A	8	Yes	Yes	900g
Crime-lite 42S	8+8	9W	6	Yes	Yes	560g
Crime-lite XL	96	115W	4	Yes	Yes	1.75Kg