

the biggest leap forward in forensic  
light source technology for over 20-years

# **Crime-lite** X

Multi-Spectral LED Light Source



1x Handheld Light Source | 10x LEDs | 175x Illumination Wavebands

# A new generation of ALS that will redefine user expectations

Multi-spectral Illumination  
10X LED wavelengths

Cycle between wavelengths or  
combine LEDs to increase power

Provides 100% performance  
regardless of battery drain



## Crime-lite X

*A handheld multi-wavelength light source that marks the biggest leap forward in forensic ALS innovation since the original Crime-lite introduced LEDs to the market in 2003*



**X10**  
High-intensity  
LEDs



**X175**  
Wavelength  
Combinations



**100%**  
Constant Light  
Output


A complete ALS kit in a single light source, the Crime-lite X includes White, UV, Violet, Blue, Blue/Green, Green, Orange, Red and Infrared LEDs.

Combine any 3 LEDs to multiply output power and generate 175x wavelength combinations to provide the optimum illumination for any evidence type.

Provides 100% constant light output, regardless of battery drain, to ensure that there is never any drop off in power or performance.

# Unrivalled functionality via simple LCD interface

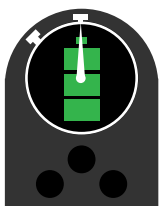


-  Quickly cycle through illumination wavebands
-  Select multi-LED wavelength combinations
-  Adjust illumination output intensity
-  Self-test ISO standard performance check
-  Integral dark adaptation checker
-  Battery Status run time/power source



**1.25"**  
Integrated Display

Take complete control of Crime-lite X functions and monitor light source performance via the integral LCD display panel.



**370**  
Minutes Runtime

Provides over 6-hours runtime on a single charge. USB Micro input enables the Crime-lite X to operate via an external powerbank.

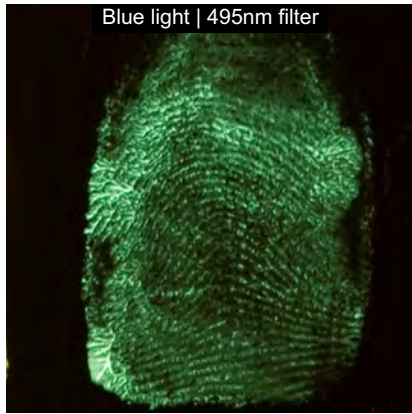


**Bluetooth®**  
Connectivity

Use the dedicated Crime-lite X mobile phone app to operate and monitor a single light source or to group multiple units for a variety of applications.



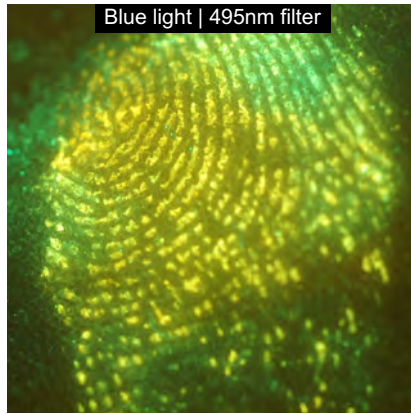
# Multi-wavelength illumination for crime scene and laboratory



Blue light | 495nm filter



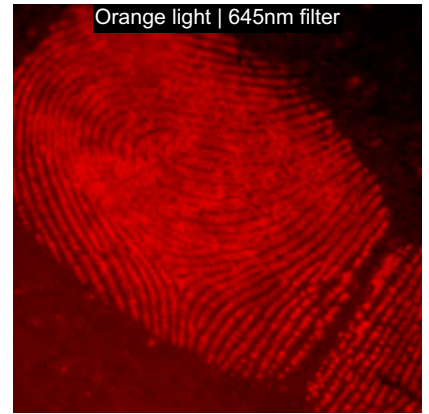
Fingerprint  
in engine grease



Blue light | 495nm filter



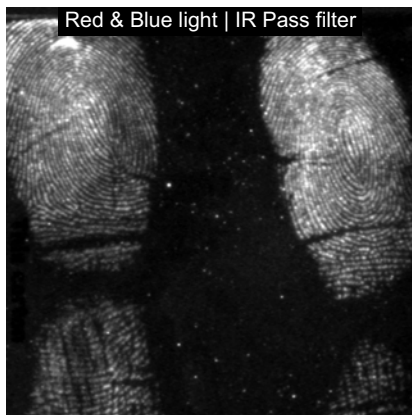
Fingerprint  
treated with BY-40



Orange light | 645nm filter



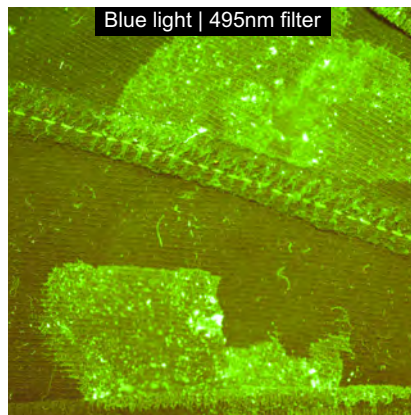
Fingerprint  
Treated with DFO



Red & Blue light | IR Pass filter



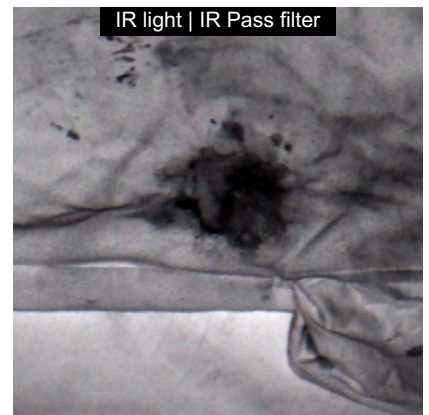
Fingerprint  
dusted with *fp*NATU



Blue light | 495nm filter



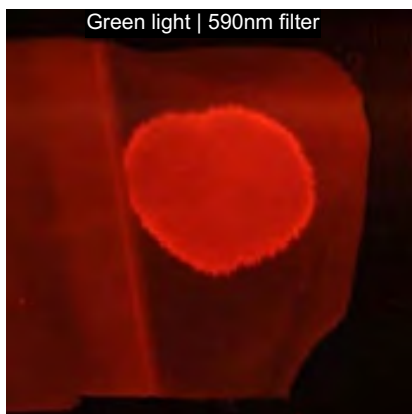
Semen  
on dark fabric



IR light | IR Pass filter



Blood  
on black fabric



Green light | 590nm filter



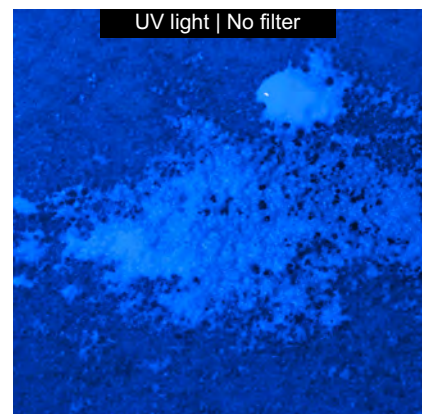
Accelerant (petrol)  
on white fabric



IR light | IR Pass filter



Gunshot Residue  
on black footwear



UV light | No filter



Body Fluids  
on carpet



At the crime scene or in the forensic laboratory, the Crime-lite X provides up to 175x wavebands of intense illumination for the detection and examination of physical evidence.

# Detect More Evidence using Crime-lite **PRO** Vision Lenses



Lightweight | Interchangeable | Anti-Glare

## **PRO** VISION Viewing Goggles

foster+freeman PRO Vision is a unique interchangeable lens filter technology designed to increase the contrast and visibility of evidence under high-intensity illumination.

Featuring an anti-glare dichroic coating to prevent auto-fluorescence, PRO Vision viewing lenses attach (via magnets) to a lightweight and comfortable goggle headset allowing the user to quickly switch between viewing wavebands on the fly.



### **Interchangeable** Magnetic Quick-Change Lenses

When alternating between Crime-lite X illumination bands, the user can quickly and easily switch their PRO Vision viewing filter to match.



### **PRO Vision** Anti-Glare Dichroic Coating

The PRO vision dichroic coating blocks all intrinsic filter fluorescence while allowing fluorescence from the evidence to pass through.



### **Comfort-Fit** and Lightweight Design

Designed in response to end user feedback, PRO Vision Filter Goggles offer improved comfort - particularly during extended use).

## Crime-lite<sup>®</sup> FULL-SPECTRUM KIT

Order #QCL/X/KIT/A

10x waveband forensic light source for the detection and examination of all evidence types

### CRIME-LITE X HIGH INTENSITY LED ILLUMINATION

- Wavelengths: UV, Violet, Blue, Blue Green, Green, Orange, Red, IR, Cold White, Warm White



- 1x high intensity LED per wavelength
- Combine any 3 LEDs providing 175 wavelength combinations
- 100% constant light output
- Homogenous light beam
- Brightness control function
- Up to 370 minutes runtime using a single wavelength

#### Full-Spectrum Kit includes:

- Crime-lite X 10x waveband forensic light source
- Crime-lite PRO Vision Goggle headset
- 6x PRO Vision interchangeable filters
- Self-test cap and beam collector lens
- Tripod and tripod adaptor
- Batteries, Battery Charger, & USB-Micro charger cable
- Rugged, waterproof scene of crime case

## Crime-lite<sup>®</sup> SEROLOGY SEARCH KIT

Order#QCL/X/KIT/B

5x waveband forensic light source for the detection and examination of body fluids

### CRIME-LITE X HIGH INTENSITY LED ILLUMINATION

- Wavelengths: UV, Violet, Blue, Blue Green, Cold White



- 2x high intensity LEDs per wavelength
- Combine LEDs
- 100% constant light output
- Homogenous light beam
- Brightness control function
- Up to 370 minutes runtime using a single wavelength

#### Serology Kit includes:

- Crime-lite X 5x waveband forensic light source
- Crime-lite PRO Vision Goggle headset
- 4x PRO Vision interchangeable filters
- Self-test cap and beam collector lens
- Tripod and tripod adaptor
- Batteries, Battery Charger, & USB-Micro charger cable
- Rugged, waterproof scene of crime case

LED safety: Crime-lite X is provisionally classified to European safety standard risk group 2 (IEC/EN 62471:2008)

## COMMON FEATURES

### HARDWARE FEATURES

- H 225mm x W 80mm x D 70mm
- Weight (including battery) ~650g (approx.)
- LED life up to 50,000 hours
- 1/4-20 UNC tripod mounting thread
- IP64 splash proof/dust tight
- Supplied with wrist lanyard and protective end cap

### INTERFACE

- Integrated 1.25" LCD display
- Easy to use, push-button operation
- Cycle through illumination wavelengths
- Adjust LED brightness
- Light source 'Self-Test' function
- Dark adaptation checker
- Battery charge status indicator

## POWER

### RECHARGEABLE BATTERY

- Supplied with 2x high quality 2.6Ah Li-Ion batteries
- High energy efficiency with low self-discharge rate
- Recharge up to 2000 times
- Up to 420 minutes run time on a single battery charge

### EXTERNAL BATTERY CHARGER

- Rapid charging of Crime-lite X Li-Ion batteries
- Charge 1 or 2 batteries simultaneously
- Charge status display
- Includes micro USB cable
- 120 minute typical charge time

### AC MAINS POWER

- Versatile USB-Micro connector

## PRO VISION FILTER GOGGLES for use with all Crime-lite forensic light sources.

### PRO VISION GOGGLES

Order# QCL/IFG

- Evidence viewing goggles with interchangeable filter slots
- Constructed from lightweight TPE with comfort-fit strap
- Can be worn over prescription glasses
- Dimensions H 75mm x W 160mm x D 75mm
- Weight (excluding lenses) 110g
- Compatible with PRO Vision and un-coated lenses

| Filter Waveband | For use with... | Filter Type and Order # |                       |                        |
|-----------------|-----------------|-------------------------|-----------------------|------------------------|
|                 |                 | PRO Vision Goggle Lens  | Un-Coated Goggle Lens | PRO Vision Camera Lens |
| GG455           | X Violet        | QCL/IFG/V               | QCL/IFG/UV-V          | QCL/152                |
| GG495           | X Blue          | QCL/IFG/B               | QCL/IFG/UV-B          | QCL/153                |
| OG550           | X Blue/Green    | QCL/IFG/BG              | QCL/IFG/UV-BG         | QCL/154                |
| OG570           | X Green         | QCL/IFG/G               | QCL/IFG/UV-G          | QCL/156                |
| OG590           | X Orange        | QCL/IFG/O               | QCL/IFG/UV-O          | QCL/157                |
| RG645           | X Red           | QCL/IFG/R               | QCL/IFG/UV-R          | QCL/82S/017            |